

CONLAY
PRIVATE RESIDENCES

**THE BEAUTY OF CONLAY.
IT'S WHAT YOU *DON'T* SEE**

The quiet strength behind the soaring form.
The artistry of fins that shade the sun, yet seed the light.
The iconic picture-framed façade that forms apertures
of ever-changing city views.

The warm throw of light against a finely textured wall,
thoughtfully placed to light your way home.
The finely-crafted symphony of stone, timber, marble
and leather, that cocoons and soothes your soul.
The exquisite carpentry that hides the clutter of life,
yet keeps it within easy reach.

The roots of majestic raintrees that enrich the soil of
lush, serene gardens.
Pools and workout zones curated to energise your spirit
and stretch your imagination.

E&O's renowned hospitality and craftsmanship, woven
into Kerry Hill's finest work in resort and space design.
The swansong of a legendary architect, a placemaking
artist.

An oasis of luxury in a busy, dynamic world city.
The insightful compromise of luxury and restraint.

**CONLAY BY E&O AND MITSUI FUDOSAN
REAL LUXURY IS IN THE EXPERIENCE**



KERRY HILL'S VISION FOR CONLAY

The exclusive boulevard where Conlay stands has long been the enclave of Kuala Lumpur's influencers and elites. Sultans chose this leafy neighbourhood for their palaces, called *istana*, within the capital city.

In keeping with the address, the team at Kerry Hill Architects have designed a soaring tower that captures the neighbourhood's rich and vibrant heritage, yet pays tribute to Kuala Lumpur's stature as a world city.

The result is a contemporary, tropical tower with a striking architectural form, that carefully melds modernity with elegance and luxury. A distinctive fin-lined, picture-framed façade that stands out in the city skyline, and captures panoramic views of the surroundings. It is a calm and elegant urban resort, located in the heart of a vibrant metropolis.

THE DESIGN PHILOSOPHY: CRAFTED SIMPLICITY

Conlay has been carefully crafted to speak the language of modern architecture, whilst paying tribute to the location's stellar heritage. The building's simple lines belie the fine craftsmanship, artistry, and respect for place, space and culture that has been seamlessly woven into every detail of this striking 52-storey structure.

The result is a tribute to the coming together of different partners with shared philosophies, to create a singular landmark of understated luxury.

LANDMARK PROJECTS BY KERRY HILL ARCHITECTS

CLOCKWISE FROM TOP LEFT

Amanemu, Shima-shi, Japan

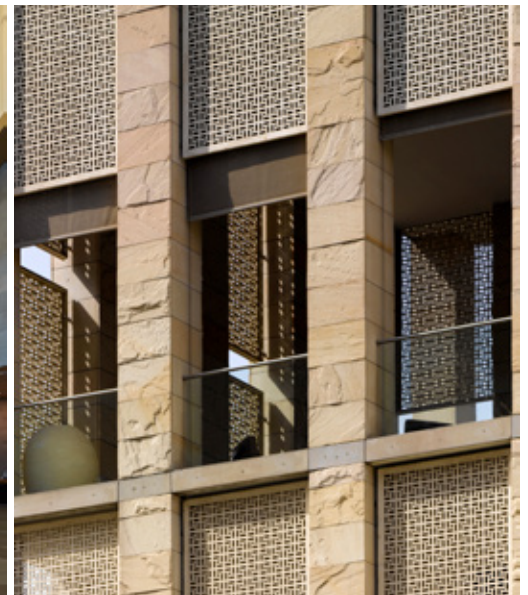
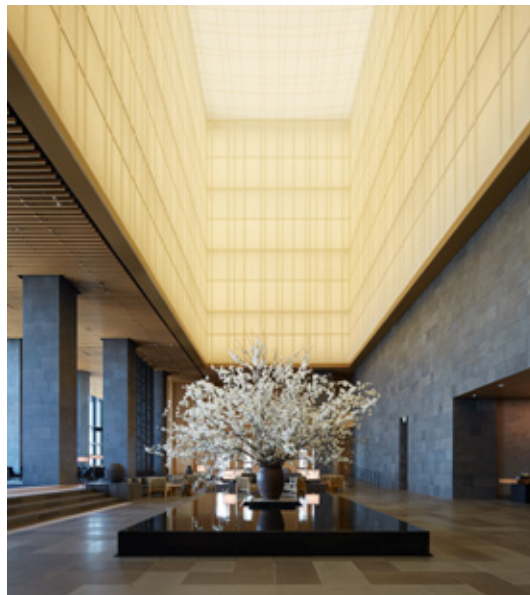
Aman Delhi, India

Aman Tokyo, Japan

Martin No. 38, Singapore

The Sukhothai Residences, Bangkok

The Datai, Langkawi





ARTIST'S IMPRESSION

REAL LUXURY IS IN THE CRAFTSMANSHIP

WELCOME TO CONLAY

The beauty of Conlay comes to life as you experience its infinite array of details. From fixtures to finishings, textures to tiles, through to landscaping and lighting, every detail has been carefully crafted in a symphony of design.

Soaring sky gardens lead to a light-dappled pool, while high glass doors lead to terraces that capture sweeping city views.

Luxuriously tall, finely-honed doors beckon you into a spacious, beautifully appointed home. Carefully laid-out rooms lead from one to another, each unique in its own way. Rest, entertain, workout, or dine up in the sky. At Conlay, you'll find luxury in every corner.



ARTIST'S IMPRESSION

REAL LUXURY IS IN
THE EXPERIENCE

One has to live the Conlay lifestyle to truly appreciate the subtle touches of luxury at every turn. Amenities and facilities have been designed in quiet tones and elegant textures, with an eye for detail. Well-trained staff offer unobtrusive service to fulfil the needs and desires of every resident.



FIRST-CLASS FACILITIES

- Dedicated lobby for the Private Residences
- Lifestyle spaces include: meeting, music, billiard, and multimedia rooms, library lounge, multi-purpose lounge and gymnasium
- Heated swimming pool
- Integrated online community app
- Shuttle services to surrounding CBD and shopping venues

ON-DEMAND HOSPITALITY SERVICES*

- Concierge service
- 24-hour doorman and security
- Housekeeping service
- Property management
- Laundry service

*Optional services, additional charges apply. Services are subject to change and are dependent on availability.



**CONLAY
PRIVATE RESIDENCES**

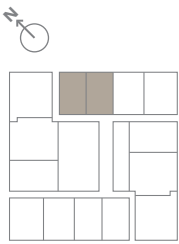
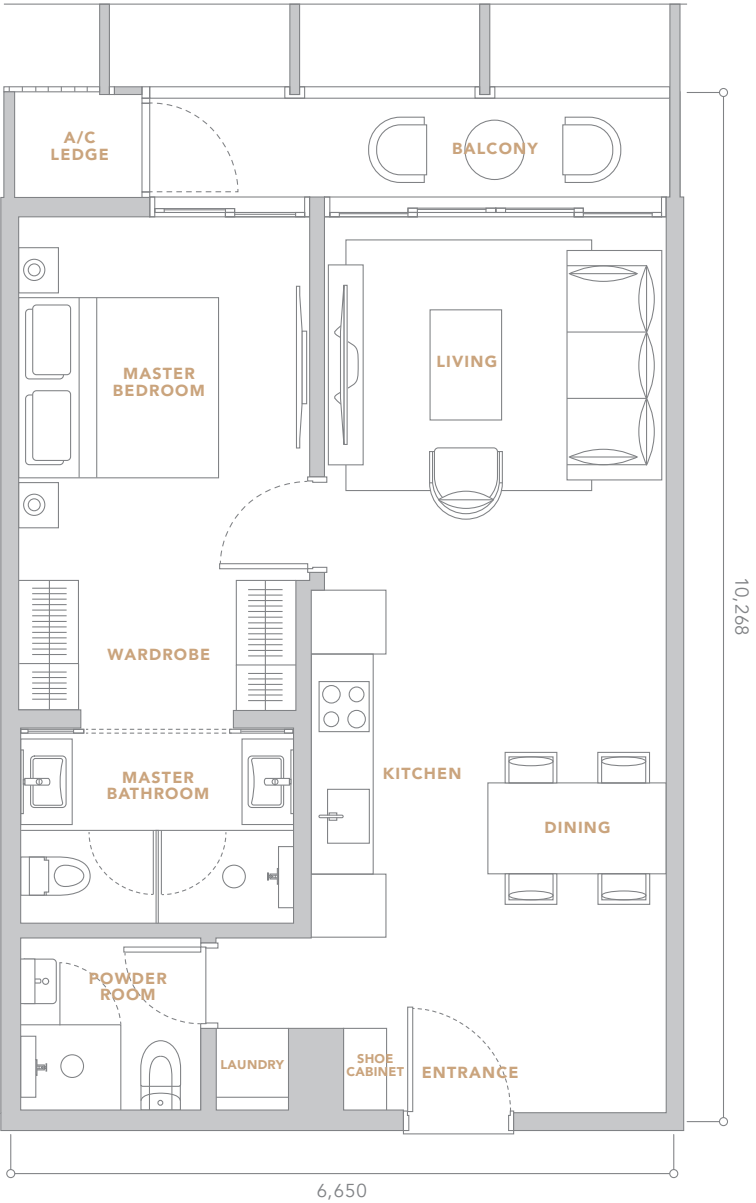
**REAL LUXURY IS IN
THE DETAILS**

The very foundation of Conlay is in the meticulous attention to detail on every level. From the artistry of its fine fins and picture-framed façade, to its simply stunning silhouette. Inside, each residence reflects this refinement and craftsmanship. Open floor plans cleverly draw the lines of separation between private and family rooms. While luxurious, branded fittings and finishes create a simple, yet gracious style. The result, spaces that set the stage for elegant living.



TYPE A1

1 BEDROOM
69 SQ.M. / 742 SQ.FT.



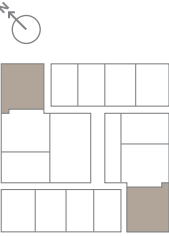
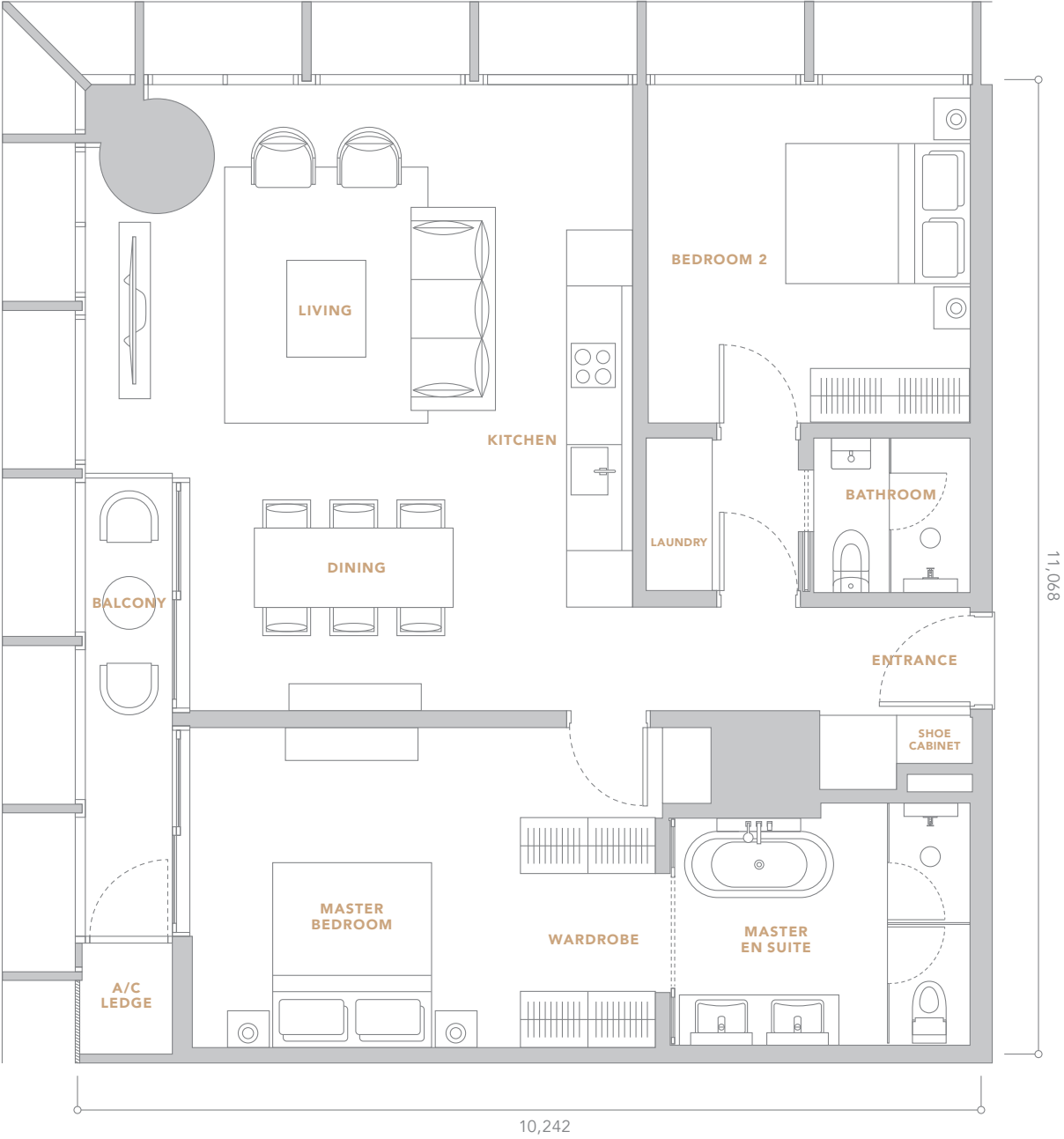
TYPE B2

1+1 BEDROOM
78 SQ.M. / 839 SQ.FT.



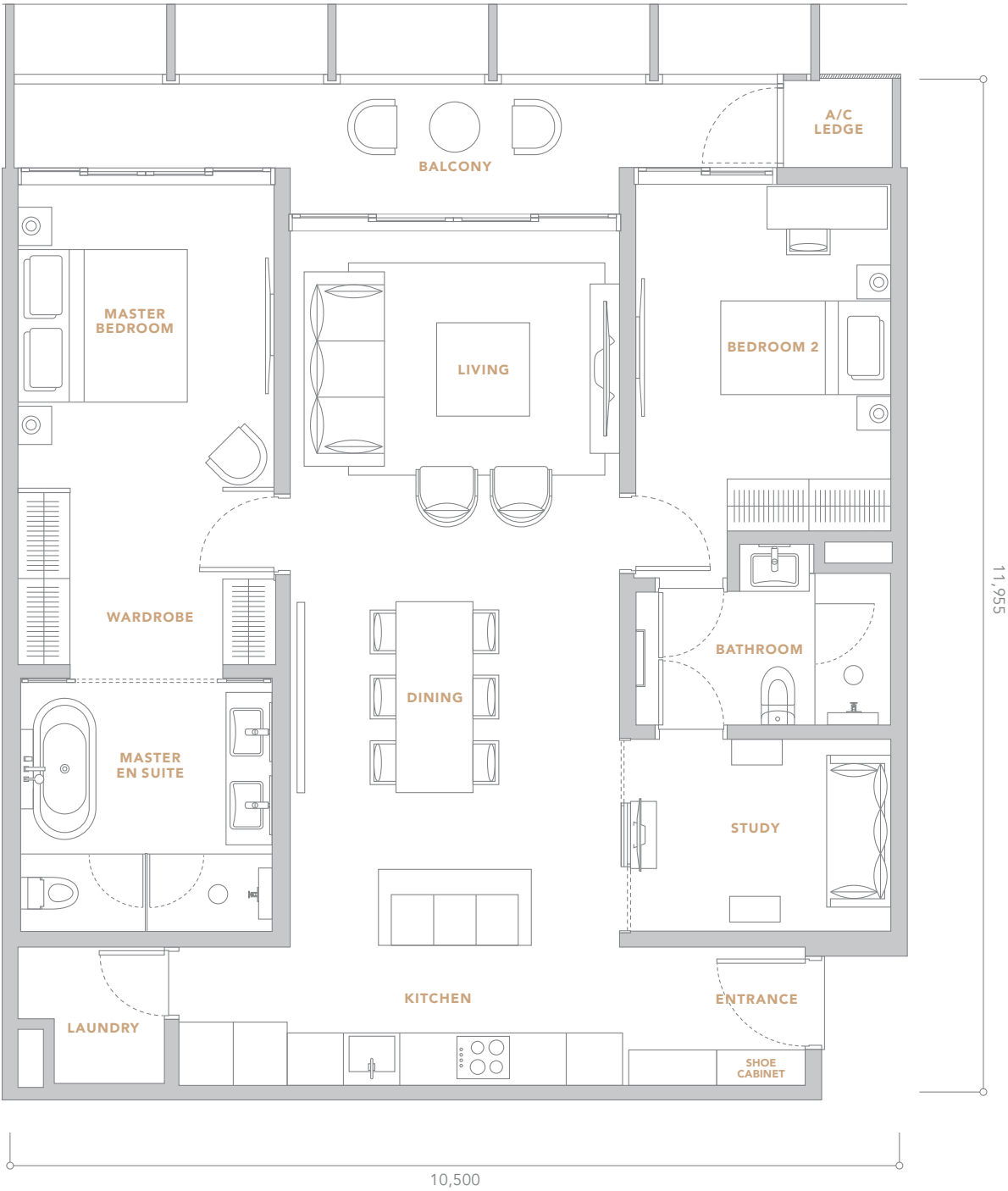
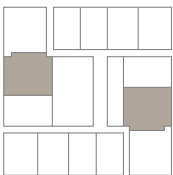
TYPE C

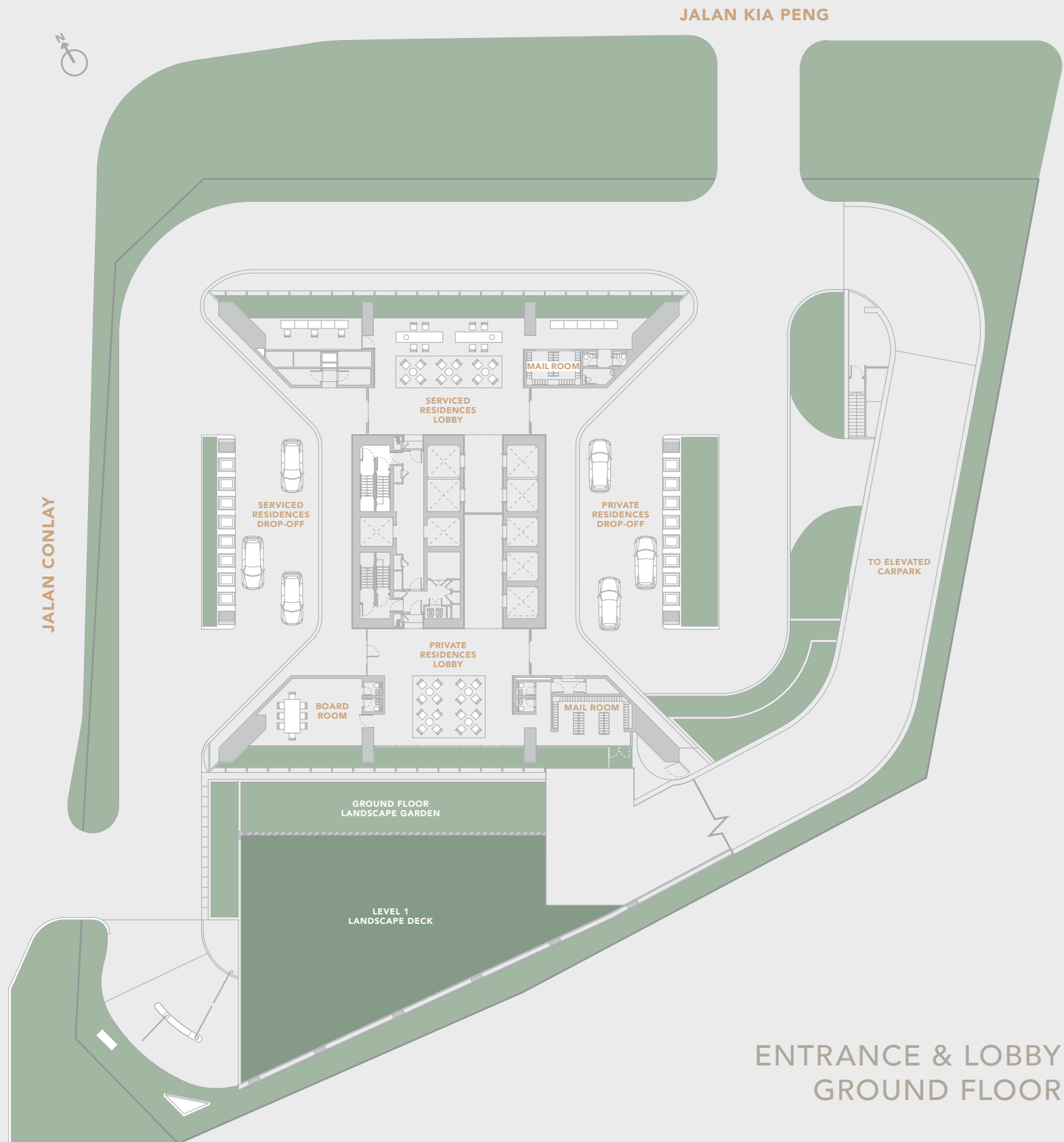
2 BEDROOMS
112 SQ.M. / 1,205 SQ.FT.



TYPE D

2+1 BEDROOMS
124 SQ.M. / 1,334 SQ.FT.

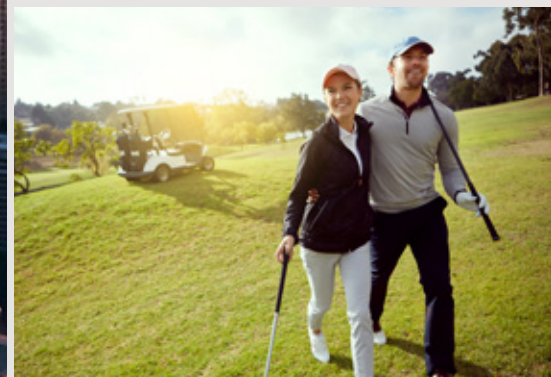




ENTRANCE & LOBBY
GROUND FLOOR



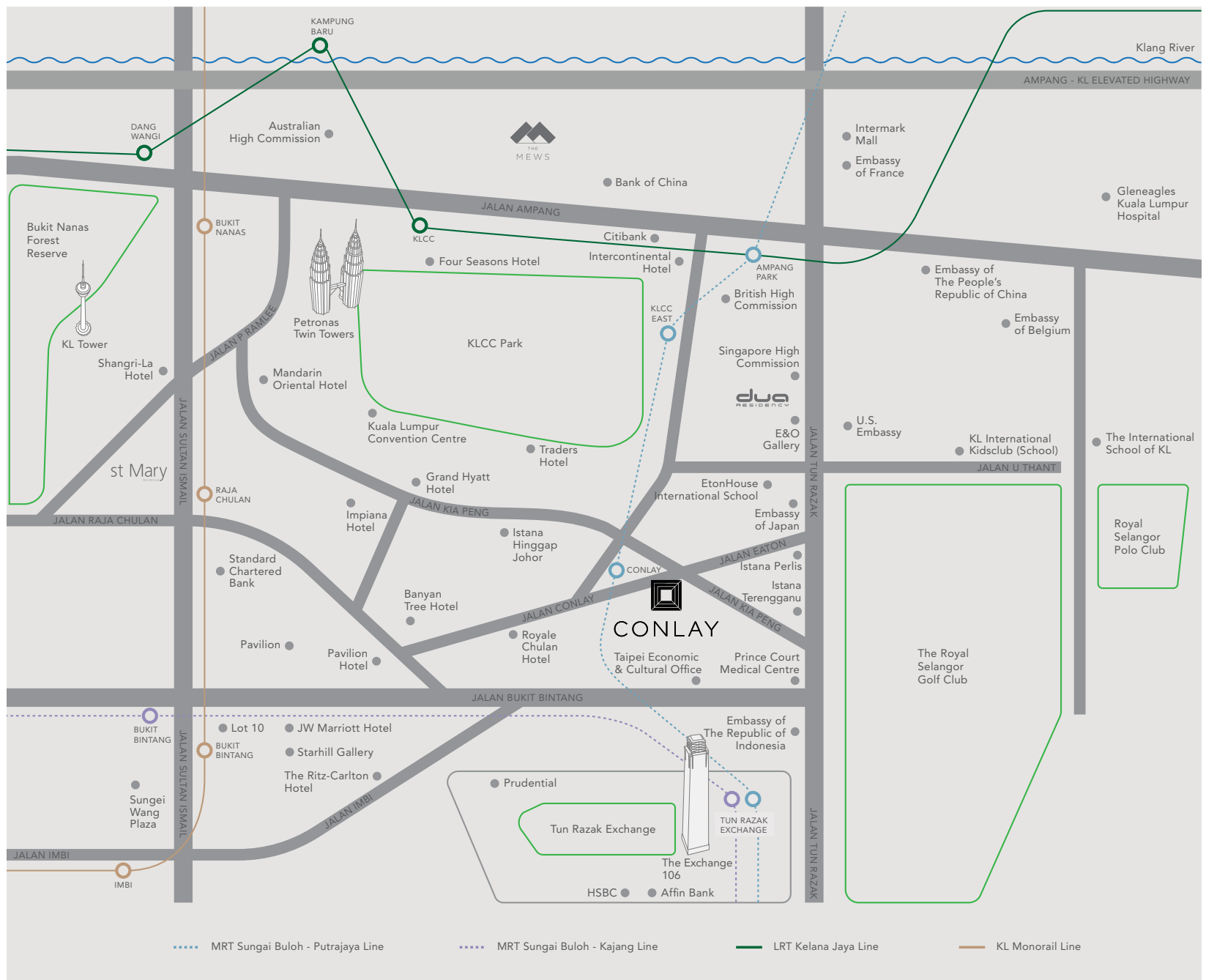
FACILITIES DECK
11TH FLOOR



REAL LUXURY POSITIONS YOU WELL

The location of Conlay is quite possibly one of the best places from which to access all that this world city has to offer – the dynamic financial district, world-renowned shopping, a smorgasbord of dining options, international standard healthcare, as well as education, embassies, arts and culture. All within easy reach through a myriad of transportation links.

Whether you choose to go for a walk in the nearby park, or travel further afield for business, pleasure or leisure, your connections are literally at your doorstep. Choose from taxis to ride-hailing services, the LRT and MRT, or simply drive yourself to where you need to go – you can be sure to reach your destination effortlessly and quickly.



DISTANCES TO VARIOUS DESTINATIONS

- Located opposite Conlay MRT Station
- Direct links to KL Sentral Transportation Hub and onward to international and domestic airports
- 0.2km - 1.2km walk to Prince Court Medical Centre Pavilion Shopping Mall | KLCC
- 4km drive to The International School of KL



Listed on Bursa Malaysia, the E&O Group is a premier lifestyle developer of exclusive addresses in Kuala Lumpur, Penang and Johor in Malaysia, and in London.

In Kuala Lumpur, its landmark properties include The Mews, St Mary Residences, Dua Residency, Idamansara and Seventy Damansara, all located in the most prestigious neighbourhoods of the capital city.

In Penang, E&O's award-winning Seri Tanjung Pinang is now a highly sought-after masterplanned, seafront address with an international community of over 20,000 nationalities. In Johor, E&O has embarked on the development of Avira in Bandar Medini Iskandar, which enjoys easy accessibility via the Second Link to Singapore. E&O's international foray is focused within prime locations in London, including Princes House along Kingsway, ESCA House in Bayswater, and a significant commercial property in Hammersmith.

E&O's leading position is derived from its namesake, the iconic Eastern & Oriental Hotel, a cherished heritage landmark in George Town, Penang, established in 1885. The Group has further leveraged on its experience and expertise in hospitality management with the opening of E&O Residences serviced apartments in Kuala Lumpur.

www.easternandoriental.com

TOP TO BOTTOM (L-R)

Eastern & Oriental Hotel, Penang

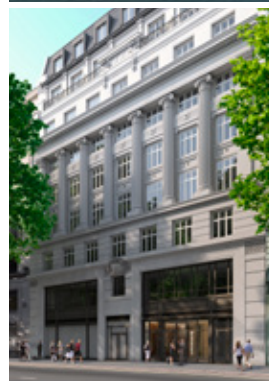
Seri Tanjung Pinang, Penang

Princes House, London

The Mews, Kuala Lumpur City Centre

Quayside Seafront Resort

Condominiums, Penang





Mitsui Fudosan has its origins in Echigo-ya, a clothing store opened in 1673 in what is now the Nihonbashi district of Tokyo. In 1941, the real estate division of Mitsui Company was separated from the parent company and Mitsui Fudosan Co., Ltd. was established.

Today, Mitsui Fudosan Group is Japan's largest real estate developer with a history of innovation that has kept it at the forefront of the real estate industry. Throughout the years, Mitsui Fudosan was responsible for the sponsorship of Japan's first REIT, the development of Japan's first factory outlet, Tokyo Disneyland, Japan's first regional shopping mall, and first office skyscraper.

As an all-rounded property industry player, Mitsui Fudosan Group has an established portfolio of hotels and resorts worldwide. The Group currently operates 26 hotels and 6,701 rooms across Japan under its Mitsui Garden Hotels and The Celestine Hotels brands. It also develops and manages a number of renowned hotels and resorts such as Amanemu Japan, The St. Regis Hotel and Residences, Singapore and Halekulani Hawaii. The Group has also developed its business through participation in residential projects in US, UK, Singapore, Malaysia, Thailand, Indonesia, Philippines, China and Taiwan in recent years.

www.mitsuifudosan.co.jp/english/

TOP TO BOTTOM (L-R)

Mitsui Honkan, Tokyo, Japan

The St. Regis Hotel & Residences, Singapore

Tokyo Midtown Hibiya, Japan

Amanemu, Shima-shi, Japan





EASTERN & ORIENTAL BHD (555-K)

KUALA LUMPUR

E&O Gallery
211A, Jalan Tun Razak
50450 Kuala Lumpur, Malaysia
T +603 2181 8881 / +6017 266 1188
E enquiry@theconlay.com

Head Office
Level 3A (Annexe), Menara Milenium
8 Jalan Damanlela, Damansara Heights
50490 Kuala Lumpur, Malaysia
T +603 2095 6868

PENANG

Seri Tanjung Pinang, Tanjung Tokong
10470 Pulau Pinang, Malaysia
T +604 890 9999 **F** +604 899 1122

JOHOR

1 Jalan Medini Timur 15
Bandar Medini Iskandar
79250 Iskandar Puteri
Johor Darul Takzim, Malaysia
T +607 509 6868 **F** +607 509 7878

LONDON

13th Floor, Landmark House
Hammersmith Bridge Road, Hammersmith
London W6 9DP, United Kingdom
T +44 (0)203 837 0000

www.easternandoriental.com

E&O LIVING



AN INTERNATIONAL COLLABORATION BETWEEN



DISCLAIMER

All measurements are approximate. Illustrations, images and furniture arrangements are artists' impressions only. All specifications and information contained herein are also subject to amendments as may be required by authorities; hence, shall not form any part and parcel or invalidate or annul any contract of sale between the Developer and the Purchaser.

THECONLAY.COM